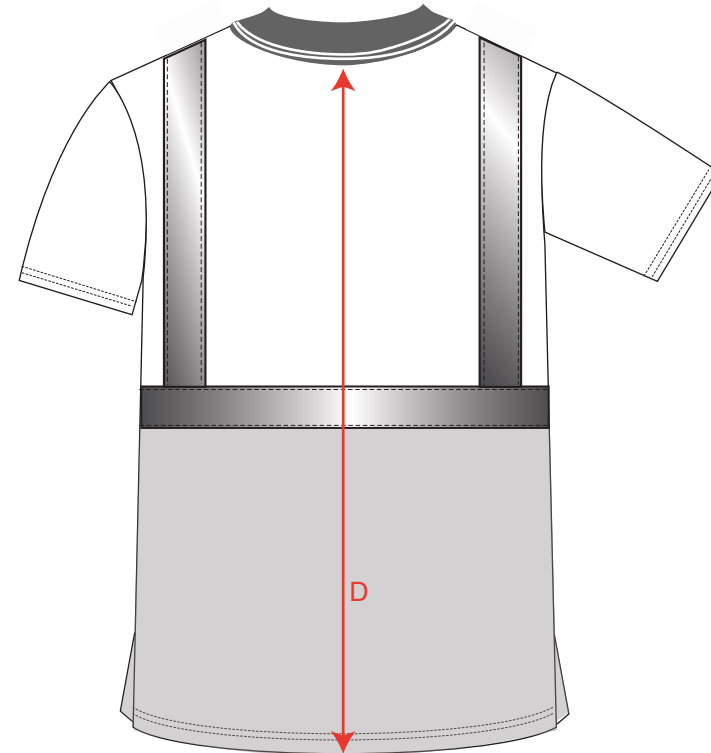
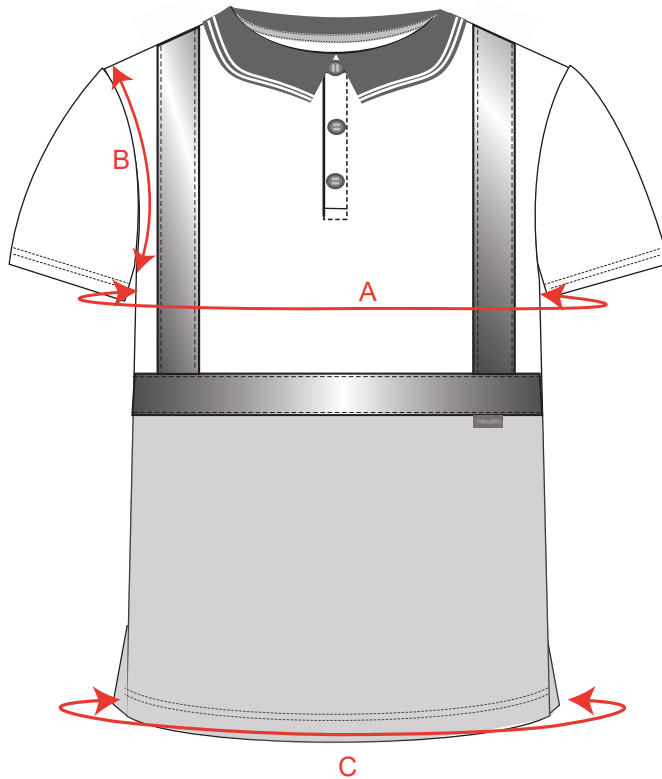


STYLE NO: S479

DESCRIPTION: Hi-Vis Two Tone Polo Shirt

FABRIC: 100% Polyester birdeye Knit

COLOUR:



Measurements in cm's for fully relaxed fabric		80-88	92-96	100-104	108-112	116-124	128-132	136-140	144-148	152-160	164-172	176-184
		XS	S	M	L	XL	XXL	XXXL	4XL	5XL	6XL	7XL
<b>A</b>	Chest	98	106	114	122	134	142	150	158	170	182	194
<b>B</b>	Armhole	25	26	27	28	29.5	30.5	31.5	32.5	34	35.5	37
<b>C</b>	Hem circumference	98	106	114	122	134	142	150	158	170	182	194
<b>D</b>	Centre Back Length	74	76	76	76	76	76	78	78	80	80	82